

FAIRFIELD FEATURES

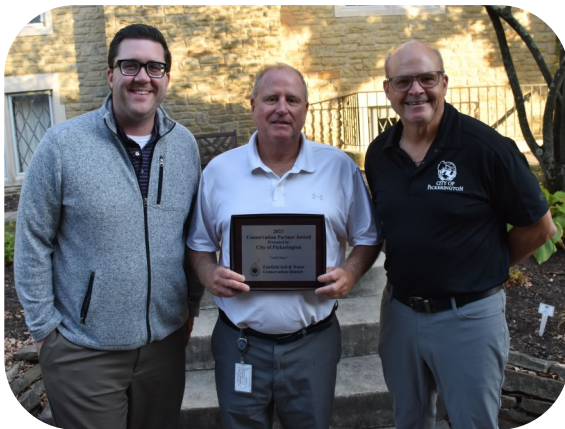


February 2025
Volume 27 Issue 1

The Fairfield Features is published by the Fairfield Soil & Water Conservation District
831 College Avenue, Suite B, Lancaster, Ohio 43130 (740) 653-8154

81ST ANNUAL MEETING HIGHLIGHTS

The Fairfield SWCD 81st annual meeting was held on September 12, 2024, at the Wagnalls Memorial Library. The evening started off with a Board of Supervisors election. Linda Claypool and Doug Tenney were both re-elected to serve three-year terms beginning January 1, 2025. After the awards, attendees were taken on a tour of the library to hear the unique history of the building and architecture, art on display, and learn about Mabel Wagnall's family who started it all.



Nick Derksen, Greg Butcher & Don Rector

The 2023 Cooperator of the Year Award was presented to Mark Boving (Boving Family Farms). The City of Pickerington (Don Rector, Greg Butcher & Nick Derksen) was chosen to receive the 2023 Conservation Partner of the Year Award. The 2023 Conservation Educator of the Year Award was given to Joe Steiger.

Congratulations to all of our award winners!



Mark Boving



Bob Parkinson, Joe Steiger & Jonathan Ferbrache



Spring is almost here! It's time again for the Tree Seedling Sale. See inside for descriptions and order form.

FAIRFIELD SWCD BOARD OF SUPERVISORS REORGANIZE

On January 9, 2025, the Fairfield SWCD Board of Supervisors selected the following officers for 2025: Doug Tenney - *Chair*, Gregg Pontius - *Vice-Chair*, Cheyenne Erb - *Secretary*, Linda Claypool - *Treasurer/Fiscal Agent* and Amber Hoisington - *Member*.

The regular monthly Board meetings will be held on the second Thursday of each month at 5 p.m. at the Fairfield County Ag Center. Anyone is welcome to attend the meetings. Please contact our office for information on any changes to the schedule or to speak.

SUPERVISORS SWORN IN

Board member Linda Claypool was sworn in by Fairfield County Commissioner Jeff Fix prior to the January 9, 2025, SWCD Board meeting. She began her third 3-year term on January 1.



Board member Doug Tenney was sworn in by Pickaway County Judge P. Randall Knece at the Area 5 Winter Meeting at Emmett Chapel in Circleville on December 4, 2024.

MARK YOUR CALENDARS!

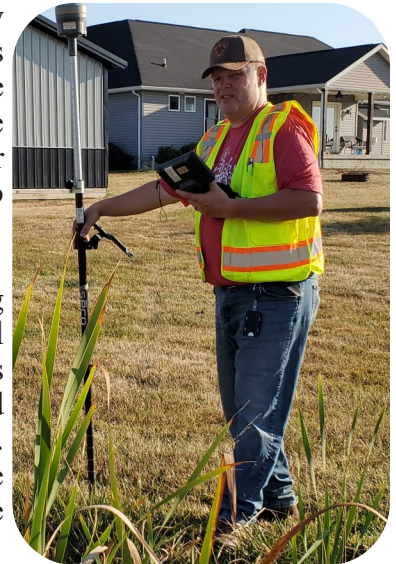
The 82nd Annual Meeting of the Fairfield SWCD is scheduled to be held in the main banquet facility at the Millersport Sweet Corn Festival site on Thursday, September 11, 2025. More details will be available in our next newsletter.

DISTRICT HIRES NEW ENGINEERING TECHNICIAN

Brent Dennis is the new Engineering Technician at Fairfield Soil and Water Conservation District. His main duty is to help producers in the county put Best Management Practices on their farm to protect the soil from either washing away or blowing away. These practices will help protect the land for use by future generations. He helps survey and design grassed waterways, tile plans and many other engineering practices.

Prior to coming to Fairfield SWCD, he worked for Licking SWCD as an Ag Technician for 3 ½ years and was with the Ohio Dept of Corrections for 21 years before that. Brent graduated from OSU-ATI with an Associate's Degree in Agronomy. Brent grew up on a grain farm in Perry County where he began his passion for agriculture and protecting the environment for future generations to use and enjoy.

Brent enjoys working in the agricultural field, as well as watching and officiating football. Brent and his wife Sarah currently reside in Licking County.



HAVE AN ORPHAN GAS OR OIL WELL?

The ODNR Orphan Well Program was established in 1977 to plug abandoned oil and natural gas wells. Ohio's program is recognized as one of the most well-funded and organized in the nation. Proper plugging of orphan wells is necessary to protect public health and safety, conserve natural resources, and allow the efficient development of Ohio's oil and gas resources.

General Questions or to report an orphan well, call (330) 308-0007 or email OrphanWellProgram@dnr.ohio.gov.

DROUGHT RELIEF FUNDING AVAILABLE

Governor DeWine signed into law Senate Bill 54 which allocates state funding to provide relief to Ohio farmers in counties severely impacted by historic drought.

The Ohio Department of Agriculture (ODA) will work with local Soil and Water Conservation Districts to administer \$10 million to 28 counties, including Fairfield, designated as primary natural disaster areas between August 19, 2024, and September 16, 2024.

Application Process:

- This program is available to any livestock producer with land enrolled in the USDA FSA Livestock Forage Disaster Program in a county designated as a primary natural disaster area by the USDA Secretary of Agriculture between August 19th and September 16th, 2024, due to drought.
- Farmers must fill out an application to apply (not yet available).
- Sign-up period begins February 15, 2025 and closes April 1, 2025.
- Contact Fairfield SWCD at (740) 653-8154 for more information.

AGENCY CONTACT INFO

Fairfield SWCD	740-653-8154
Brent Dennis	740-415-3920
Nikki Drake	740-415-3924
Jonathan Ferbrache	740-415-3925
Christina Holt	740-415-3910
Chad Lucht	740-415-3919
Margaret Roberts	740-415-3930
Lauren Vires	740-415-3905
NRCS	740-653-5320
Dave Libben	740-415-3921
Torrance Corbin	740-415-3922
Farm Service Agency	740-653-4012
OSU Extension	740-653-5419

If you wish to be removed from our newsletter mailing list, or if you have an address change, please let us know.

If you would like to receive our newsletter by e-mail, please call 740-653-8154 or e-mail information@fairfieldswcd.org.

OHIO HOUSE PASSES LEGISLATION EXEMPTING MILKWEED SEED DISTRIBUTION

The Ohio House of Representatives recently passed House Bill 364, legislation that exempts certain non-commercial seed-sharing activities from laws governing seed labeling, inspection, and advertising. The legislation is sponsored by State Reps. Dave Dobos (R-Columbus) and Roy Klopfenstein (R-Haviland).

Specifically, House Bill 364 exempts any non-commercial seed sharing to conserve plants that are necessary for the sustainment and growth of threatened or endangered species. It also exempts non-commercial seed sharing to conserve or create native plants.

“The idea for this bill was brought to us by one of my constituents, David Donofrio, who serves as the Vice President of the Ohio Prairie Association,” said Dobos. “Some of the organization’s members wanted to share seeds of milkweed plants to help our dwindling monarch butterfly population, but current law prohibits it.”

In the past 20 years, the monarch butterfly population has plummeted by nearly 90%. Monarch butterflies are famous for their migration starting in Mexico and coming to Ohio, where they lay their eggs only on milkweed, which then serves as their only source of food before they travel back.

“House Bill 364 will fix unintended consequences caused by restrictions on seed sharing,” said Klopfenstein. “By allowing certain seed sharing, we will help boost conservation efforts around the state.” House Bill 364 now heads to the Ohio Senate for further consideration.

2025 SEEDLING TREE SALE

NATIVE SHRUBS, SMALL TREES, FRUIT BEARING



Arrowwood Viburnum- *Viburnum dentatum*
 Mature Height: 6–15'
 Mature Width: 6–15'
 Growth Rate: M
 Light Required: ☀️ ☁️
 Soil Moisture: D, M, W
 Soil pH: A, N, B

Comments/Uses: ornamental, white flowers, and blue-black berries attract pollinators



Black Chokeberry- *Aronia melanocarpa*
 Mature Height: 3–6'
 Mature Width: 3–6'
 Growth Rate: S–M
 Light Required: ☀️ ☁️
 Soil Moisture: M
 Soil pH: A

Comments/Uses: fall foliage, black fruit in winter and attracts wildlife



Pawpaw- *Asimina triloba*
 Mature Height: 15–30'
 Mature Width: 15–30'
 Growth Rate: M–F
 Light Required: ☀️ ☁️
 Soil Moisture: M, W
 Soil pH: A, N

Comments/Uses: edible fruit, wildlife



Red Osier Dogwood- *Cornus sericea*
 Mature Height: 20–30'
 Mature Width: 20–25'
 Growth Rate: S–M
 Light Required: ☀️ ☁️
 Soil Moisture: M
 Soil pH: A

Comments/Uses: spring flowers, red/burgundy fall foliage



Spicebush- *Lindera benzoin*
 Mature Height: 6–12'
 Mature Width: 6–15'
 Growth Rate: S–M
 Light Required: ☀️ ☁️
 Soil Moisture: M, W
 Soil pH: A

Comments/Uses: host plant for swallowtail butterfly, pollinators, wildlife, fall foliage and fragrant



Arapaho Thornless Blackberry- *Rubus fruticosus* 'Arapaho'
 Mature Height: 4–6'
 Mature Width: 3–4'
 Growth Rate: S–M
 Light Required: ☀️ ☁️
 Soil Moisture: M
 Soil pH: A

Comments/Uses: small seeds and thornless- good for jams and syrups, pollinators



Fallgold Yellow Raspberry- *Rubus idaeus* var. *strigosus* 'Fall Gold'
 Mature Height: 2–4'
 Mature Width: 2–4'
 Growth Rate: F
 Light Required: ☀️
 Soil Moisture: M
 Soil pH: A

Comments/Uses: ever-bearing, producing golden-colored medium to large conical berries that are extremely sweet

NATIVE LARGE TREES



Black Gum- *Nyssa sylvatica*
 Mature Height: 60–80'
 Mature Width: 20–30'
 Growth Rate: S–M
 Light Required: ☀️ ☁️
 Soil Moisture: M
 Soil pH: A

Comments/Uses: wildlife and pollinators



Chinkapin Oak- *Quercus muehlenbergii*
 Mature Height: 40–60'
 Mature Width: 50–80'
 Growth Rate: S–M
 Light Required: ☀️ ☁️
 Soil Moisture: D, M
 Soil pH: B

Comments/Uses: drought tolerant, fall foliage and wildlife



Northern Pecan- *Carya illinoensis*
 Mature Height: 70–100'
 Mature Width: 40–80'
 Growth Rate: M
 Light Required: ☀️
 Soil Moisture: D, M
 Soil pH: N

Comments/Uses: edible fruit, wildlife, timber



Pin Oak- *Quercus palustris*
 Mature Height: 50–70'
 Mature Width: 40–60'
 Growth Rate: M–F
 Light Required: ☀️ ☁️
 Soil Moisture: M, W
 Soil pH: A

Comments/Uses: wildlife



Swamp White Oak- *Quercus bicolor*
 Mature Height: 50–70'
 Mature Width: 50–70'
 Growth Rate: S–M
 Light Required: ☀️ ☁️
 Soil Moisture: M
 Soil pH: A

Comments/Uses: adaptable, bottomlands, timber, wildlife

NATIVE LARGE CONIFER TREES



Eastern White Cedar- *Thuja occidentalis*
 Mature Height: 40–45'
 Mature Width: 12–15'
 Growth Rate: S–M
 Light Required: ☀️ ☁️
 Soil Moisture: M, W
 Soil pH: N

Comments/Uses: ornamental, wet footed



White Pine- *Pinus strobus*
 Mature Height: 60–80'
 Mature Width: 20–40'
 Growth Rate: F
 Light Required: ☀️
 Soil Moisture: M
 Soil pH: A, N

Comments/Uses: timber, windbreak, wildlife

Orders are processed on a first-come, first-served basis. **Orders with cash/check must be received by Friday, March 7, 2025. Online order deadline is Friday, March 21, 2025.**

Pick-up date is Friday, April 18, 2025, from 7 a.m. to 6 p.m. at the Fairfield Co. Ag Center.

Order Online at:
www.LickingSWCD.com



Get in touch with your roots and order your trees today.

Growth Rate:
 F = fast, 12"+ per year,
 M = medium 6–12" per year,
 S = slow 2–6" per year

Light Required:
 S = sun ☀️
 P = part sun/shade ☁️
 SH = shade ☁️

Soil Moisture:
 D = dry, M = medium, W = wet

Soil pH:
 A = acidic (6.5 or less),
 N = normal pH range (6.5–7.5),
 B = basic/alkaline (7.5+)

2025 Seedling Tree Sale Order Form

Indicate quantity of saplings or packs in area provided for each variety.

Native Shrubs, Small Trees, and Fruit Bearing		Sapling (2'-4')	Pack of 5 (12"-18")	Pack of 25 (12"-18")	Total # of Packets x price		
		\$12.00	\$15.00	\$45.00			
Arrowwood Viburnum							
Black Chokeberry							
Pawpaw							
Red Osier Dogwood							
Spicebush							
Arapaho Thornless Blackberry Root cuttings 8"-12"			Not Available in 5 or 25 Packs				
Fallgold Yellow Raspberry Root cuttings 10"-16"			Not Available in 5 or 25 Packs				
Native Large Broadleaf Tree Species		Pack of 5 (12"-18")	Pack of 25 (6"-12")	Pack of 100 (6"-12")	Total # of Packets x price		
		\$15.00	\$40.00	\$110.00			
Black Gum							
Chinkapin Oak							
Northern Pecan		5-Packs Unavailable					
Pin Oak							
Swamp White Oak							
Native Large Conifer Tree Species		Pack of 5 (12"-18")	Pack of 25 (6"-12")	Pack of 100 (6"-12")	Total # of Packets x price		
		\$15.00	\$35.00	\$80.00			
White Pine							
Eastern White Cedar							
Additional Items	Cost	Qty	Total price	Additional Items	Cost	Qty	Total price
Erosion Seed Mix	\$5.00			Watering Rings	\$12.50		
Wildflower Seeds	\$5.00			Marking Flags	\$0.20		
Marking Paint	\$9.00			Dibble Bar	\$95.00		
Tree Tube/Stake	\$7.50			Pond Management Book	\$20.00		
Tree sizes are estimates and based on nursery availability. SWCD reserves the right to make reasonable substitutions if the vendors' supplies are limited.				Subtotal:			
Cash/Check Order Deadline: March 7 Online Order Deadline: March 21 ~ Pick Up: April 18				Sales Tax (6.75%)			
				Complete Total:			

Name: _____

Address: _____

City: _____ State: _____ Zip: _____

Phone: _____

Email: _____

FOR OFFICE USE ONLY

Date _____

Rec# _____

Ck# _____

You will receive a reminder by email to pick up your order

Remit with payment to: **Fairfield SWCD, 831 College Ave., Suite B, Lancaster, OH 43130**

Visit our partner online at www.lickingswcd.com for online ordering (online orders will be charged Licking County's tax rate of 7.25% regardless of which county you pick up in).

The online catalog does not allow the removal of tax, so if you are tax exempt, please use this printed order form and submit to Fairfield SWCD with tax exempt form.

Hugus Fruit Farm



Old Rushville Road
Rushville, OH 43150
740-536-9590
HugusFruitFarm.com

Fresh from Our Orchard to Your Hands

In Season: Peaches - Plums - Pears - Apples - Cider



Agricultural Drainage

Tile Installation (*Trenching & Plowing*)
Waterway Construction (*Grading/Dirt Blowing*)

Seeding Services

CRP ♦ Commercial
Residential ♦ Erosion Control

RUFF
AGRI-SERVICES, LLC

Circleville, Ohio
1-800-372-2438
www.rufffarms.com mruff@rufffarms.com

This ad space
is available



MILLER DITCHING

5265 Richland Road, N.E.
740-468-3587
Cell 740-808-4860
Pleasantville, Ohio 43148



It Pays to Plant Ruff's Seeds
SEED CORN - GRASS SEED
SOYBEANS - OATS - WHEAT

RUFF'S SEED FARMS

Amanda, Ohio 43102 Phone 740-969-2600

FALER FEED STORE, INC.

*Bulk Garden Seeds, Grass Seed and Fertilizer,
Bird Seed, Lawn and Garden Supplies*

4360 Cedar Hill Road See us on Facebook at Faler Feed 614-837-4494
Lithopolis, Ohio 43136

We give

FARMERS CREDIT.

We help rural residents build,
farms grow and businesses expand.



Call (855) 838-9965 or
go to e-farmcredit.com

7835 Lancaster Newark Rd.,
P.O. Box 68, Baltimore, OH 43105



PONDS & WATERWAYS - DITCH WORK
FENCE ROWS CLEARED
DITCHING MACHINE - FARM DRAINAGE
WETLAND DEVELOPMENT



KULL EXCAVATING

LOGJAM REMOVAL 740-225-2501 TILE WORK
GRAVEL HAULING LOCALLY OWNED AND OPERATED LIME DELIVERY



Walnut Creek Seeds, LLC.
SIMPLE. SUSTAINABLE.

Carroll, OH 330-475-6352 www.WalnutCreekSeeds.com

Cover Crop Seeds for Soil Health and Profitability

Agriculture - Forages - Gardens - Custom Mixing - Seed Cleaning

This ad space
is available

Millersport Agri Service

The Hoover Family

Agricultural Equipment • Grain Storage • Handling & Drying Systems
10221 Lancaster-Newark Road • Millersport, OH 43046
Phone/Fax 740-467-2424 www.millersportagriservice.com



SEALS CONSTRUCTION INC.



"WE CRUSH IT...WE SELL IT"

- Trucking
- Recycled Aggregates

614-836-7200

- Topsoil
- Custom Crushing

www.SealsColinc.com

www.SealsColinc.net 10283 Busey Rd. Canal Winchester, OH 43110 info@sealscolinc.com



GRADING WATERWAYS FARM
PONDS DITCH WORK DRAINAGE

FREE ESTIMATES

2225 Old Logan Road
Lancaster, Ohio 43130
Cell: 740-503-4079

C & C Farms and Excavating, Inc.

32091 Beechcamp Road ~ Logan, Ohio 43138
740-385-8395 ~ ccfarms1@juno.com

SITE WORK - FARM DRAINAGE - WATERWAYS
PONDS and SPECIALIZED MOWING



LAW OFFICE OF
CARRIE LOTT
LLC



2130 W. FAIR AVENUE, LANCASTER
740.652.1701

Carrie Snoke Lott, Title Agent

CEDAR HILL BLANKETS

Distributor of Erosion Control Blankets
G-Pins - Installation Tools

Greg Waidelich 740-969-4295
1915 Cedar Hill Road Amanda, OH 43102

K&K Lime & Fertilizer Spreading & Hauling



Aaron Kull 740-225-2501
Seth Kull 740-225-3298

Fairfield County



Follow us on Facebook @
Fairfield County Antique Tractor Club
www.fairfieldcountytractorclub.com

Annual show August 15, 16 & 17, 2025

Antique Tractor Club

Fairfield County Fairgrounds

**Beveridge
Trailers
& Trucks**



4510 Westfall Road
Lancaster, Ohio 43130
740-969-2814
email: beveridgetrailers@gmail.com

Pappy's Feed Store

Livestock and domestic animal feed and supplies

Kalmbach, Tribute Feeds. LG Seed Dealer

701 N. Walnut St., Baltimore OH 740-400-4268

THINK TWICE, PLANT ONCE - WHERE YOU MIGHT NOT WANT TO PLANT TREES

If you have decided to plant some trees on your property, research the site conditions for the type of tree you have chosen – size at maturity including root depth/width, light requirements, and drainage are a few things to consider. Remember to call OUPS at 811 prior to planting.



! UTILITY RIGHTS-OF-WAY

Trees too close to power lines or utilities will be trimmed or removed by a utility company or their contractor. This results in higher utility bills for customers and risk for power outages due to falling limbs.



! Trees should not be planted on a POND DAM or too close to the POOL. Their roots will seek water and can cause leakage.



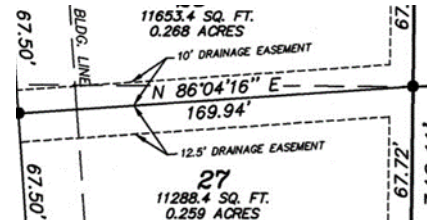
! Tree roots will plug clay and perforated plastic TILE. Know what size your tree will be when mature to avoid planting too close to subsurface drainage.



! For the same reason above, avoid your SEPTIC SYSTEM and LEACH lines.



! Trees around the property can be a great windbreak but consider the distance from the PROPERTY LINE. If planted on or too close, your neighbor may cut limbs that hang over. Avoid planting too close to FENCES also.



! If you live in a subdivision, your property may have an EASEMENT (example – drainage easement) you are unaware of and should avoid. You may be able to find this information on the Auditor's website.



! Roots can damage HOME foundations, sidewalks, and concrete driveways. Some communities prohibit trees between sidewalks and the curb.



! If you pasture livestock, some plant species may be POISONOUS to your animals.

FAIRFIELD SWCD COLLEGE SCHOLARSHIPS

The Fairfield SWCD will award up to three \$1,000 college scholarships for any graduating high school seniors that plan to study Agriculture, Natural Resources Conservation, or Environmental Education. The scholarship can be used for the pursuit of two-year or four-year degree programs as well as a technical college. Applicants must be residents of Fairfield County and can be home-schooled. The applicant must have a minimum cumulative grade-point average (GPA) of 3.0 on a 4.0 scale at the time of application.

Applications for this scholarship can be acquired at the SWCD office or through the Fairfield SWCD website at <https://fairfieldswcd.org/scholarship/>. Along with the application, an official high school transcript, 400 word essay and two letters of recommendation are required. One recommendation needs to come from a teacher at the applicant's school; the other should be from a person in the local community (neither can be a relative). Eligible applicants will be required to interview to be eligible for the scholarship, with a decision made by the end of the current school year.

Scholarship funds will be distributed in two payments of \$500. The first payment will be issued once the recipient submits proof of full-time enrollment for the fall semester. The final payment will be issued after successfully completing the first semester of college and the submittal of grades to the SWCD office showing the recipient achieving at least a 2.5 GPA on a 4.0 scale. Checks will be made payable to the student and can be used for tuition, room and board, books, or other educational expenses. Deadline to apply is March 31st.

The United States Department of Agriculture (USDA) prohibits discrimination in its programs on the basis of race, national origin, sex, religion, age, disability, political beliefs and marital or familial status. (Not all prohibited bases apply to all programs). Persons with disabilities who require alternative means for communication of program information (Braille, large print, audiotape, etc.) should contact the USDA TARGET Center at (202) 720-2600 (voice and TDD).

To file a complaint, write the Secretary of Agriculture, U.S. Department of Agriculture, Washington D.C. 20250 or call 1-800-245-6340 (voice) or (202) 720-1127 (TDD). USDA is an equal employment opportunity employer.

DISTRICT SUPERVISORS

Linda Claypool
Cheyenne Erb
Amber Hoisington
Gregg Pontius
Doug Tenney

DISTRICT PERSONNEL

Brent Dennis
Nikki Drake
Jonathan Ferbrache
Christina Holt
Chad Lucht
Margaret Roberts
Lauren Vires

NRCS PERSONNEL

Torrance Corbin
Dave Libben

Please Don't Trash Me — Pass Me!
I'm recycled and recyclable!



ADDRESS SERVICE REQUESTED

831 COLLEGE AVENUE, SUITE B, LANCASTER, OH 43130



FAIRFIELD SOIL & WATER CONSERVATION DISTRICT

Non-Profit Org.
U. S. Postage
PAID
Lancaster, Ohio
Permit No. 235